

Savannah House & Land

Lot 905 Galah Drive, Calala

\$ 439,875.00



INCLUSIONS

- + Land size 700m²
- + Preliminary plans & Council Certification
- + Engineering & site costs
- + 2550mm ceiling height
- + Raft slab to suit H1 class site
- + Structural grade treated timber frame/trusses
- + Colorbond roof with sarking
- + Remote Panelift garage door
- + 5100L round water tank
- + Aluminium windows with flyscreens
- + Daiken ducted air-conditioner
- + Stone benches & soft close drawers to kitchen
- + Quality appliances
- + Carpet, laminate & roller blinds throughout
- + Shelving to WIR & robes
- + Quality fixtures, tapware & accessories
- + Downlights throughout
- + TV antenna, clothesline & letterbox
- + Concrete driveway 60m²



Your dream home at an affordable price

wjmhomes.com

(02) 6762 6860

wjmhomes@bigpond.com

Savannah House & Land

Lot 905 Galah Drive, Calala



Specifications

Internal: 170m²
Garage: 40.4m²
Porch: 2.4m²
Alfresco: 19.7m²
TOTAL AREA: 232.5m²



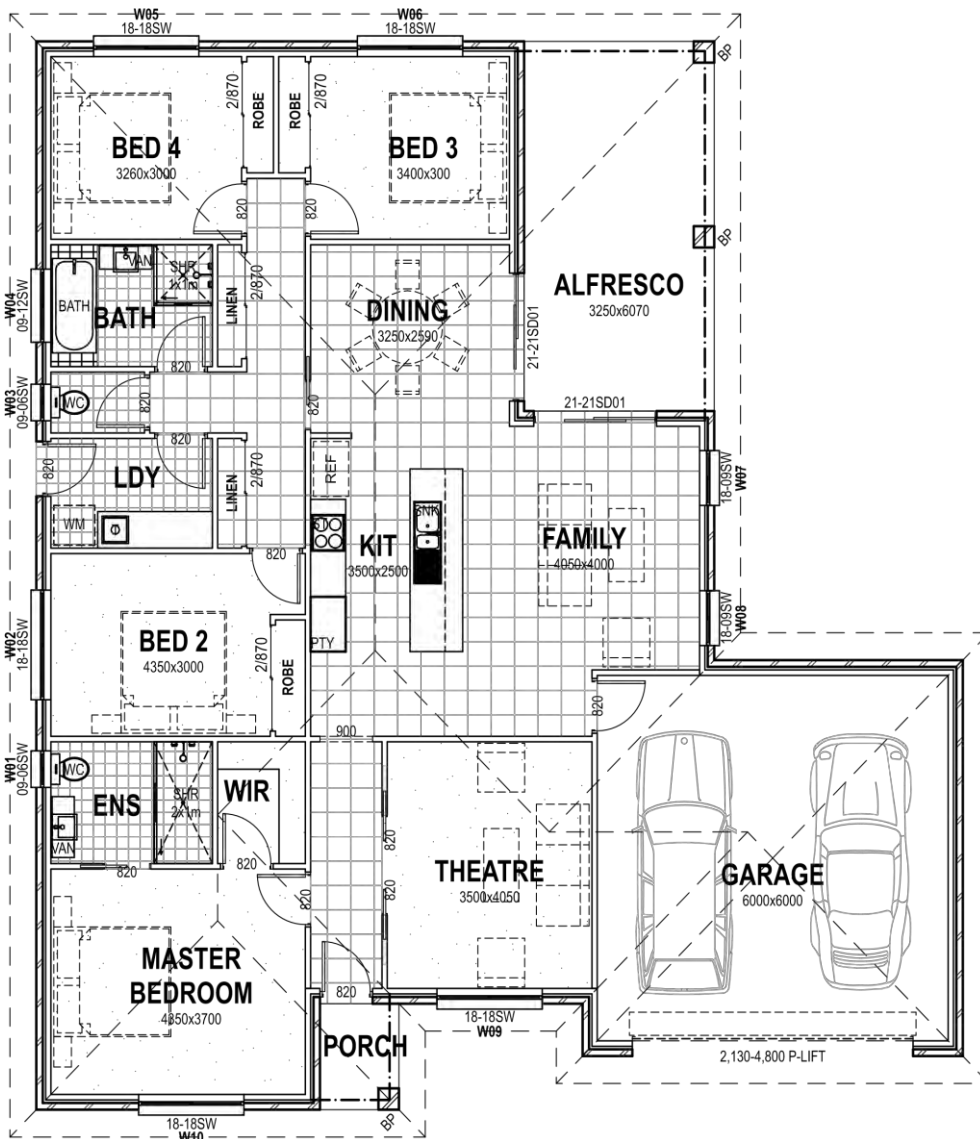
4



2



2



Your dream home at an affordable price

wjmhomes.com

(02) 6762 6860

wjmhomes@bigpond.com