

Savannah House & Land

Lot 1104 Eagle Avenue, Calala

\$ 462,200.00



INCLUSIONS

- + Land size 703m²
- + Preliminary plans & Council Certification
- + Engineering & site costs
- + 2550mm ceiling height
- + Raft slab to suit H1 class site
- + Structural grade treated timber frame/trusses
- + Colorbond roof with sarking
- + Remote Panelift garage door
- + 5100L round water tank
- + Aluminium windows with flyscreens
- + Daiken ducted air-conditioner
- + Stone benches & soft close drawers to kitchen
- + Quality appliances
- + Carpet, laminate & roller blinds throughout
- + Shelving to WIR & robes
- + Quality fixtures, tapware & accessories
- + Downlights throughout
- + TV antenna, clothesline & letterbox
- + Concrete driveway 60m²



Your dream home at an affordable price

wjmhomes.com

(02) 6762 6860

wjmhomes@bigpond.com

Savannah House & Land

Lot 1104 Eagle Avenue, Calala



Specifications

Internal:	170m ²
Garage:	40.4m ²
Porch:	2.4m ²
Alfresco:	19.7m ²
TOTAL AREA:	232.5m²



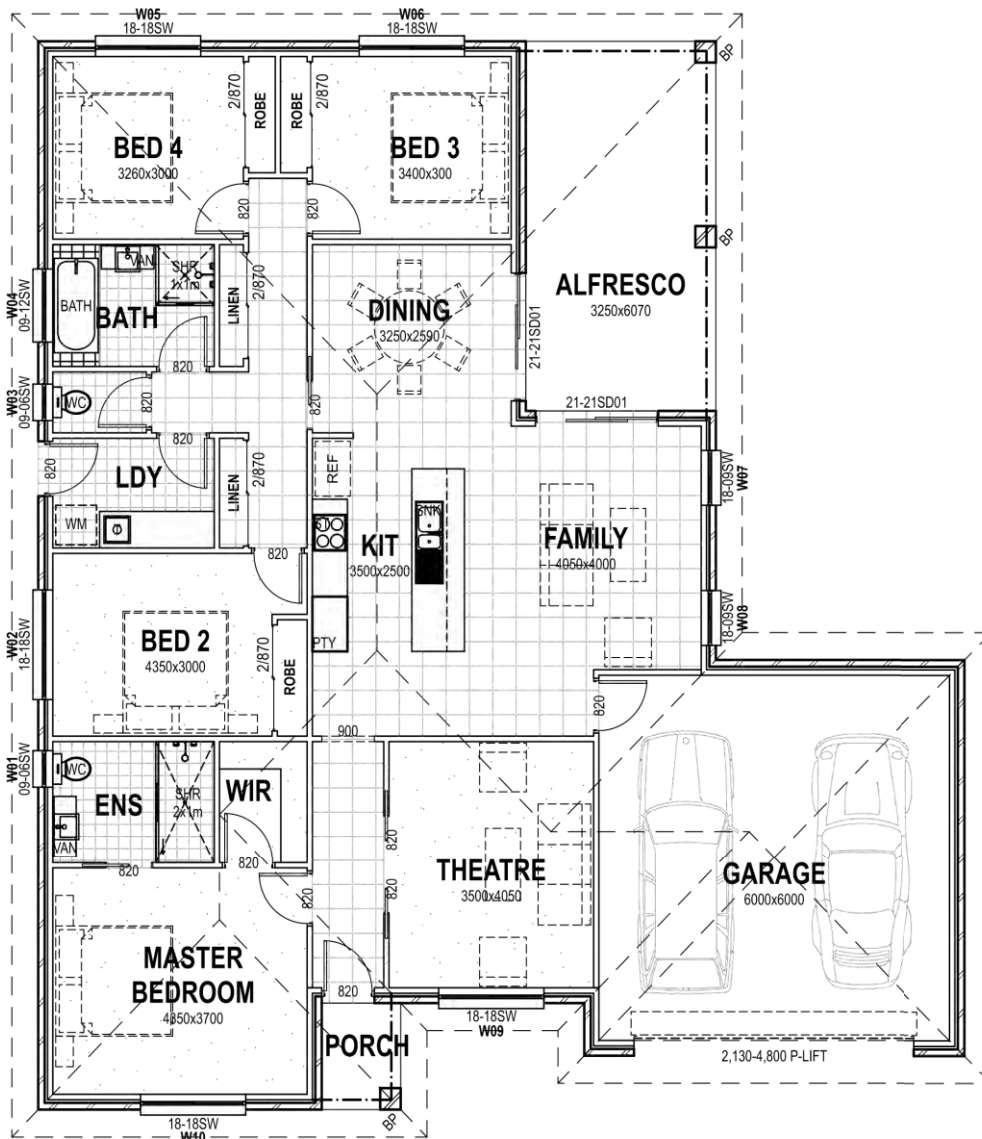
4



2



2



Your dream home at an affordable price

wjmhomes.com

(02) 6762 6860

wjmhomes@bigpond.com