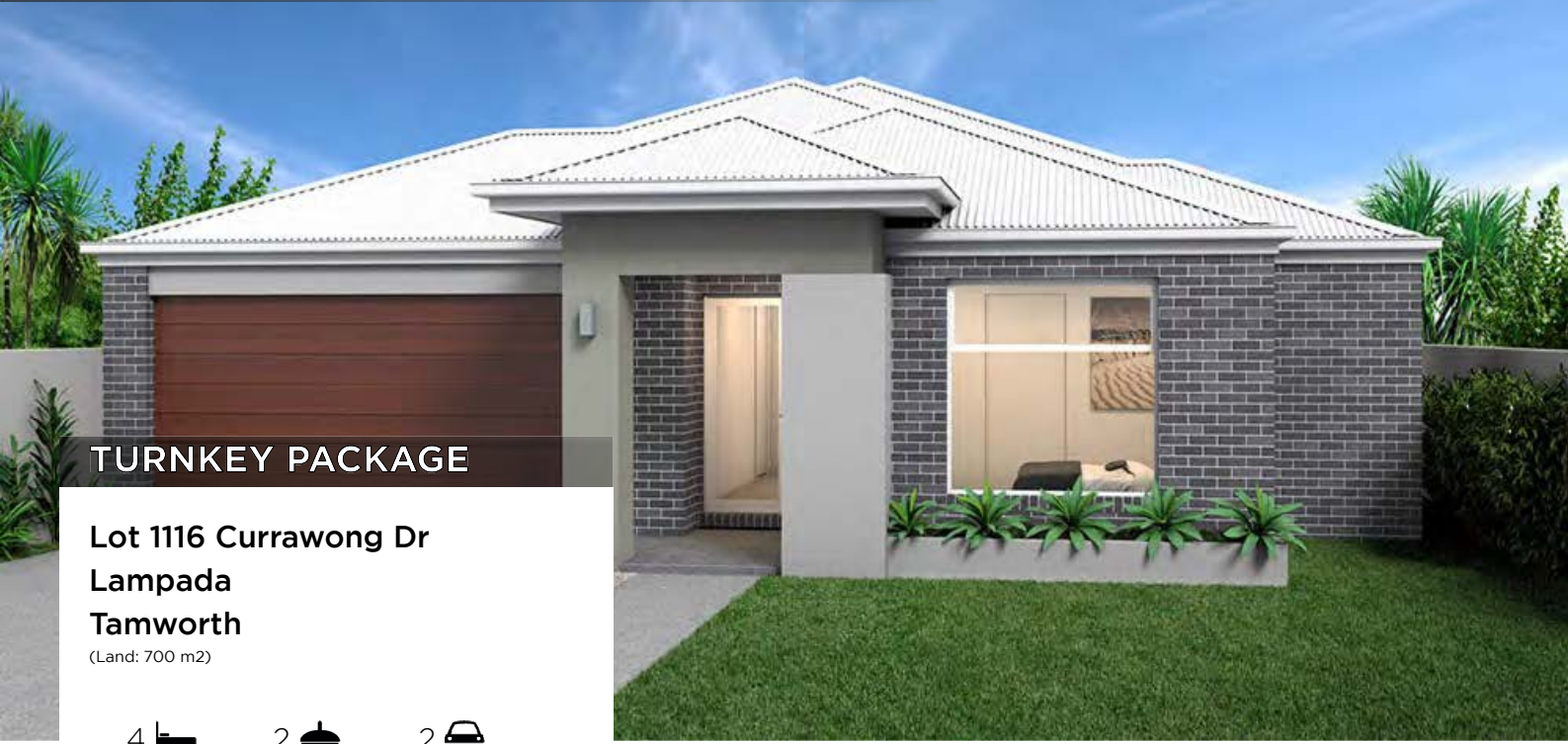


N O R T H C O T E 2 0 8



TURNKEY PACKAGE

**Lot 1116 Currawong Dr
 Lampada
 Tamworth**
 (Land: 700 m2)

4 2 2

Total (sqm.)	22.39
Total (m ²)	207.96
Width (m)	13.02
Length (m)	17.36

\$464,300*

Features & Inclusions

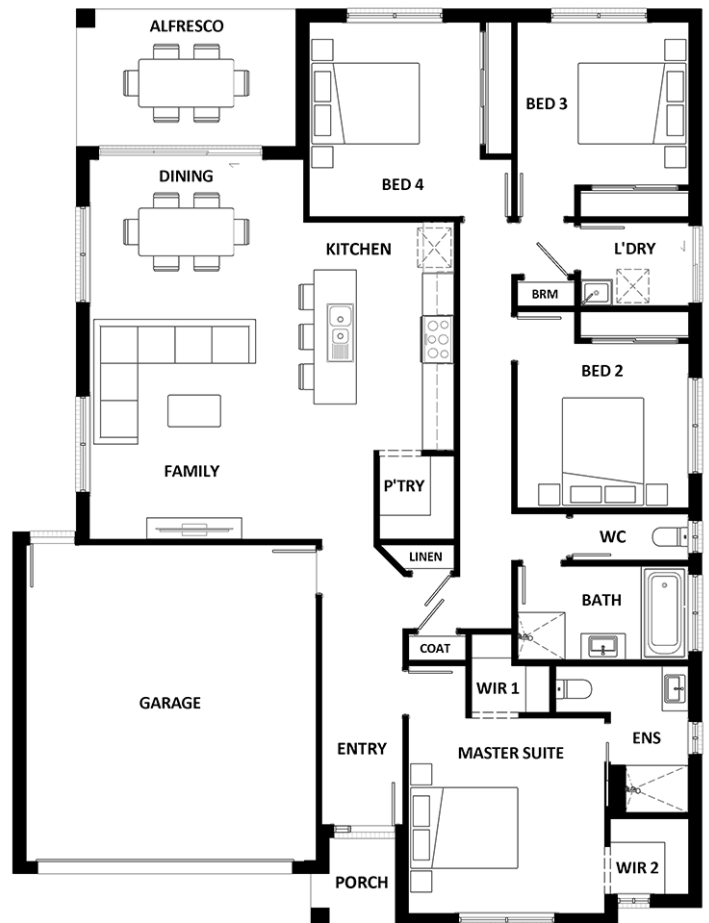
- 20mm Stone Benchtops
- 5,000Ltr Water Tank
- Facade Included
- Fencing Allowance
- Front Landscaping & Driveway

For more details, call

Danny Botfield

0407212069

hotondohomestamworth@gmail.com



*Dimensions, photographs, floor plans and facade images are approximate and for illustrative purposes only. They are not drawn to scale. The dimensions provided of "width" and "length" are the actual dimensions of the completed house including alfresco areas (where applicable). It is the home owner's responsibility to ensure that all applicable council regulations and estate requirements are met. Subject to land availability, pricing and site costs unless advertised as a 'fixed price package'. Driveway size based on builder's preferred siting. Check with your local builder for builder's standard range and inclusions. Photographs may include optional features or items that are not supplied by Hotondo Homes. Hotondo Homes reserves the right to change plans, specifications, materials and suppliers without notice. For more information visit your local builder or hotondo.com.au.